

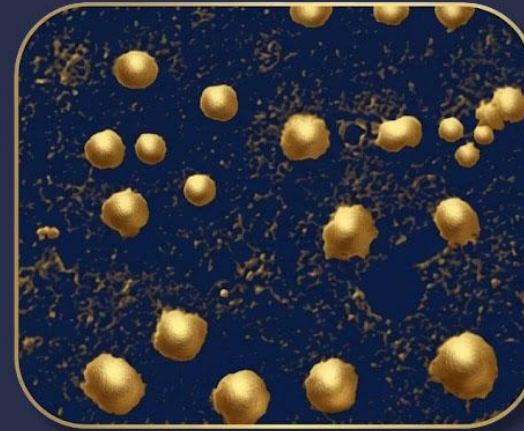


Project Nano

Investment Teaser

Project Nano is advancing a proprietary microbubble platform that extends ultrasound from imaging to therapy, with a Phase II contrast agent and therapeutic programs targeting blood-flow restoration, blood-brain barrier opening, thrombosis, heart attack, and cancer.

Founded by a sector pioneer, Project Nano is advancing Asset A for next-generation contrast imaging alongside Asset B for vascular ischemia and Asset C for non-thermal tumor ablation across large diagnostic and therapeutic markets.



Scale Bar = 5 Micrometer
Bubbles for Microdiagnostics



Scale Bar = 0.1 Micrometer
NanoBubbles for Theranostics

INDUSTRY

Ultrasound MedTech

HEADQUARTERS

Undisclosed

TOTAL FUNDING

\$21.4M

FUNDING ASK

\$8.0M

PRODUCT OVERVIEW

01 ASSET A - Ultrasound Contrast Agent : Phase II Complete

Vascular Disease

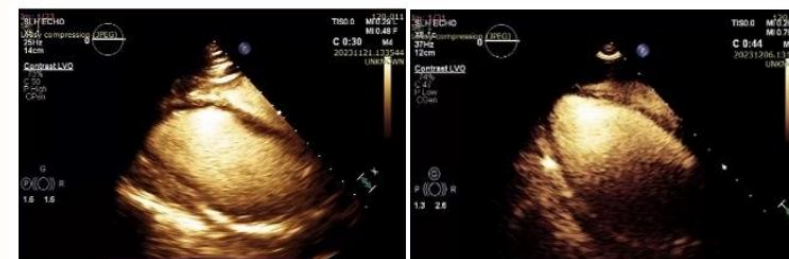
- Heart attack, stroke, venous thrombosis, pulmonary emboli

Cancer

- Brain cancer, metastases, solid tumors (e.g. pancreatic cancer)

Regenerative Medicine

- Gene therapy, stem cells CNS • Alzheimers' disease, neurodiseases



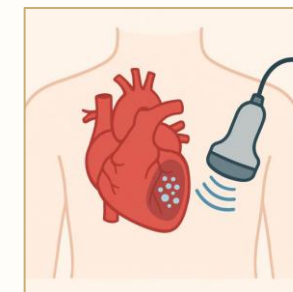
Asset A

Comparator

02 ASSET B - Breakthrough Treatment of Heart Attack

Ultrasound mediated therapy for Cardiology: Pre-clinical

- ✓ 20-minute treatment with Asset B ↓ heart attack damage by 95%
- ✓ Non-invasive, simple IV injection, easy to perform
- ✓ Regulated by FDA as Device
- ✓ Device is 3-5x faster to develop than drug and 10-20x cheaper
- ✓ Yet pharmaceutical margins achievable with Asset B



03 ASSET C - Non-thermal brain tumor ablation : Pre-clinical

- ✓ IV injection
- ✓ Activated under ultrasound
- ✓ Safe, fast, effective, and noninvasive
- ✓ Pre-clinical studies show longterm survival from single treatment session
- ✓ Synergy with chemo, radiation, and immunotherapy



COMPANY OVERVIEW

- Clinical-stage biotech developing ultrasound microbubble and nanobubble agents for diagnosis and therapy, founded by a sector pioneer.
- Lead asset, Asset A, is a next-generation contrast agent designed for better contrast, less shadowing, room-temperature storage and improved usability.
- Platform extends into Asset B for acute vascular ischemia / clot dissolution and Asset C for non-thermal focused ultrasound tumor ablation.

TRANSACTION OVERVIEW

- Seeking an \$8M priced round to fund Asset A Phase III / pivotal work, Asset B IDE filing and continued platform advancement.
- Commercial strategy includes Asset A out-licensing / distribution with large pharma and direct or strategic licensing paths for Asset B and Asset C.
- Near-term catalysts include Asset A Phase III start and follow-on pilot studies beginning in 2027.

INVESTMENT HIGHLIGHTS

- 01 Phase III-ready lead asset**
Asset A completed Phase II and has FDA guidance in hand; blinded review showed superior contrast and reduced acoustic shadowing.
- 02 Multi-product market exposure**
One platform supports diagnostics, reperfusion, tumor ablation and targeted delivery across large ultrasound, vascular and oncology markets.
- 03 Capital-efficient profile**
More than \$12M of non-dilutive support, roughly \$50K monthly burn and FDA device classification for therapeutic follow-ons may reduce cost and timing.
- 04 Multiple partnering avenues**
Commercial paths include contrast-agent licensing, hospital / imaging-center sales and strategic interest from ultrasound, medtech and pharma buyers.

SELECTED PIPELINE SNAPSHOT

Metric	Asset A	Asset B	Asset C
Primary indication	Echocardiography	MVO / DVT / PE	Brain tumors
Stage	Phase II complete	Pre-IDE	Pre-IDE
Reg. path	Phase III guidance	FDA device class	FDA device class
Launch target	2027/28	2029	2030
Projected revenue	\$800M	\$2.0B	\$400M

PRODUCT / PLATFORM OVERVIEW

- Asset A: Phase II-complete contrast agent with superior contrast, reduced shadowing and room-temperature storage.
- Asset B: ultrasound-mediated reperfusion / clot-dissolution candidate for heart attack, DVT and PE.
- Asset C: non-thermal focused-ultrasound tumor-ablation candidate with upside in BBB opening and targeted delivery.

GO-TO-MARKET MODEL

- Asset A targets high-volume imaging centers via KOL-led adoption, existing CPT-code workflows and large-pharma distribution partnerships.
- Management is pursuing out-licensing for Asset A while preserving direct sales options into hospitals and imaging centers.
- Asset B and Asset C can be advanced through specialty-center commercialization or strategic licensing after clinical de-risking.

END MARKETS & FOOTPRINT

- Near-term entry is echocardiography, with expansion into vascular disease, oncology, CNS and regenerative medicine.
- Company materials outline roughly \$63B TAM, \$26B SAM and \$3B SOM across diagnostic ultrasound, vascular and tumor applications.
- Partnership network includes select strategic partners, foundations and academic institutions.

KEY DIFFERENTIATORS

01 Best-in-class performance

Superior contrast and less shadowing in Phase II, with room-temperature storage and a 72-hour post-activation window.

02 Platform optionality

Shared microbubble / nanobubble technology spans imaging, reperfusion, tumor ablation and targeted delivery.

03 Accelerated development path

Asset A follows an abbreviated path; Asset B and Asset C carry FDA device classification, potentially reducing time and cost.

04 De-risked operating base

Phase II complete, 13 issued patents, certified GMP manufacturing, non-dilutive grants and external validation.